

Bulletin 2

Organizers

LOF Trail-O committee.

PreO1 will be organised by orienteering club "Taciņa". Event director: Z. Rukšāne

PreO2 will be organised by orienteering club "Stiga". Event director: J. Gaidelis

Competition centre (scheme)

5.07. competition centre near the stadium "Daugava" in Riga. Coordinates: 56.955120, 24.157011

8.07. competition centre in Priedaine. Coordinates: 56.9721288, 23.8719908

From electric train station "Priedaine" to competition centre distance – 1km.

Competition centres - [MAP](#)

Event programme

5.07. free start in PreO1 16.00-19.00

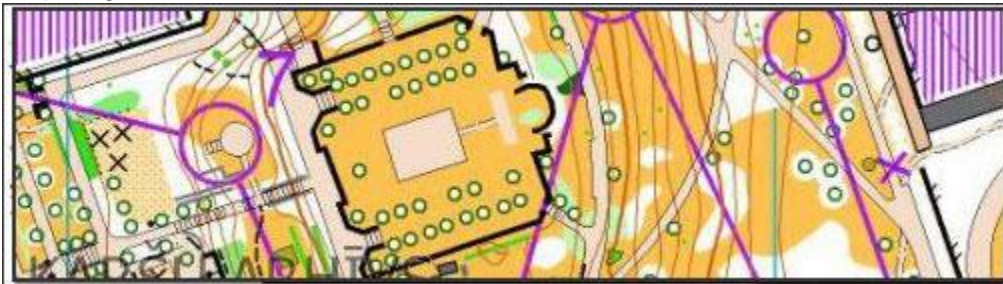
8.07. free start in PreO2 15.00-18.00

Terrains and maps

5.07 Streets and parks. Solid pavement (asphalt, cobblestones), gravel at some places.

Map and courses by A. Rukšāns. Scale 1:4000, contours 2.5m.

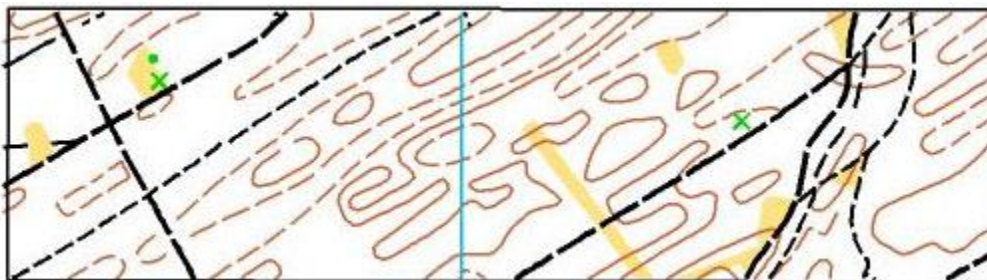
Map fragment:



8.07. Pine and spruce forest with good visibility. Solid forest roads.

Map adapted for TrailO and courses by J. Gaidelis. Scale 1:4000, contours 2.5m.

Map fragment:



Classes

All competitions four classes:

- AE – elite open
- PE – elite paralympic

- B – OPEN class - beginners
- J – youngsters under 18

Courses

5.07. "Elites" classes 1,7 km 22 CP, control time 117 min.

"OPEN" un "Youngsters" classes 1,15 km 12 KP, control time 73 min.

8.07. "Elite" classes 1,6 km 24 KP, control time 120 min.

"Open" un "Youngsters" classes 1,0 km 10 KP, control time 60 min.

Punching

Sport Ident will be used for time control. The punching will be done with composters in control cards.

Entries

The entries can be made in competition centre

Entry fees

Elite classes 10 EUR per competition, beginners and juniors - 5 EUR per competition.

Prizes

Souvenirs for beginners and juniors at the finish.

Prize giving ceremony for elite classes on 08.07.2019.after the last finish.

Bank details:

Biedrība "TACIŅA"

Reg.No.: 40008177838

Bank: SEB Bank

SWIFT: UNLALV2X

IBAN: LV46UNLA0050017071829